



CAPPELLA 2010

2010 ABREU

Cappella

ST HELENA, CA

PROPERTY



Cappella, Italian for chapel, is named for the historic stone chapel in St Helena's Holy Cross Cemetery adjoining our modest 6-acre vineyard. Constructed in 1904, the chapel sits amid the headstones of pioneering St Helena families, a constant reminder of the generations who came before us.

Planted in the early 1920s to Petit Syrah and Zinfandel, Cappella hooked David Abreu's attention in the late 1970s with its concentrated fruit. Their next encounter was ill-fated, though: in the mid-1980s David was engaged by the church to remove the vineyard, after which time the land lay fallow for close to two



decades. Finally, in 2000, the opportunity to replant emerged, and these 6 acres became home to Abreu's favored combination of Cabernet Sauvignon, Cabernet Franc, Petit Verdot and Merlot.

The vineyards immediately west of the town of St Helena are a part of the Sulphur Creek watershed, and as such have weathered decades of alluvial deposits from the Mayacamas Mountains. A highly erosive Franciscan formation provided a bounty for gravel miners in the area, as well as Pleasanton loams generously littered with rock – a well-drained base for the Bordeaux varieties planted at Cappella.



2010 **ABREU**

Cappella

ST HELENA, CA

The 2010 vintage granted a lengthy growing season culminating in a short, fast-paced harvest. The vines were in great condition at harvest: balanced and uniform canopies with pristine fruit. Yields were lower than normal, allowing us to co-ferment more blocks than in previous years. Harvest began at Cappella on September 29 with the Merlot, followed closely by selective picks in both Cabernet Sauvignon blocks, taking fruit from the afternoon side of the canopy only. The remaining fruit was picked on October 11 and 12 to make two separate Cabernet Sauvignon-based fermentations, both accented by Cabernet Franc and Petit Verdot.

We believe selectively harvesting vine-by-vine then co-fermenting across varieties brings synergy and balance, while simple, yet meticulous winemaking allows the wines to speak vividly of site and vintage. Exhaustive fruit sorting in the field and the winery preceded gentle cold soaks and steady ferments in small two and three ton fermenters. By the fall of 2012, the three Cappella ferments assembled in 2010 had been narrowed down to

COMPOSITION:	Cabernet Sauvignon, Cabernet Franc, Petit Verdot, Merlot
PICK DATES:	September 29-30, October 8, 10, 11 & 12
PRODUCTION:	9 barrels
BOTTLED:	December 2012
RELEASE DATE:	October 2014
WINEMAKER:	Brad Grimes
PROPRIETOR:	David Abreu

nine barrels, forming a characteristically fine Cabernet-dominant blend, bottled without fining or filtration.

2010 is undoubtedly a special vintage, producing wines of brilliance and character which display unmistakable expressions of their single site provenance.



707.963.7487
info@abreuvineyards.com

“The 2010 Cappella reveals a dense purple color, and even greater aromatic and flavor dimensions than the 2009. Notes of sweet creme de cassis, coffee bean, graphite, white chocolate and forest floor are followed by an intense, full-bodied, luxuriously textured wine that has plenty of tannin, but is sweet and enrobed by sumptuous fruit and glycerin. This fabulous 2010 is one of the superstars of the vintage. It should continue to evolve for 25-30 years. 2013 – 2043.”

Robert Parker—The Wine Advocate

“The 2010 Cappella impresses for its depth and complexity. A higher-toned register replete with white floral notes adds considerable refinement. Blackberries, cassis, spices and dark fruit are some of the notes that take shape in the glass. The 2010 is articulate and beautifully defined from the taste.

A last blast of fruit saturates the palate on the finish. This is a hugely promising wine from

David Abreu and Brad Grimes.”

Antonio Galloni—Vinous Media

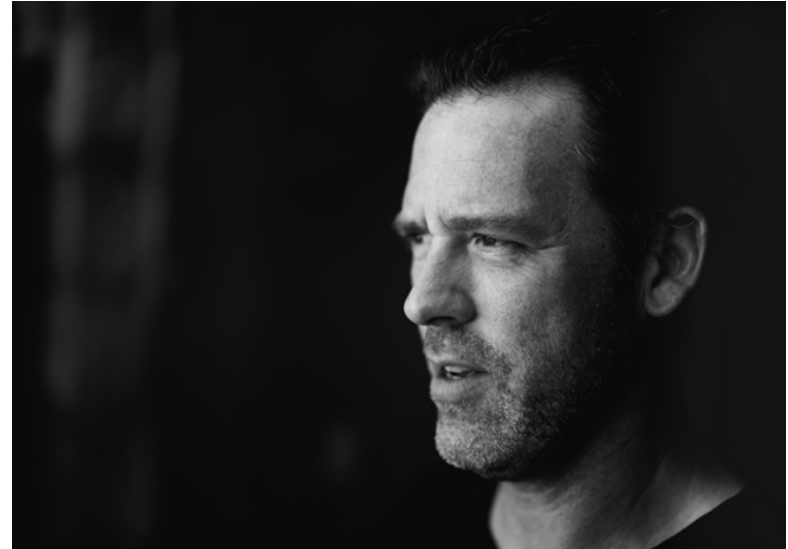


JOURNEY



A third-generation Napa Valley native raised in a farming family, David Abreu knows how to coax the best from the land he farms. Spending his youth in Napa's original vineyards, David went on to develop an intimate knowledge of the Valley's winegrowing terroir, managing the vineyards of many applauded wineries.

Over time, his gift for recognizing exceptional sites led him to four distinctive vineyards that comprise the core of Abreu: Madrona Ranch, Thorevilos, Lucia Howell Mountain and



Cappella. Meticulously maintained, their sculpted form bears David's unmistakable stamp, each producing compelling fruit that can only come with an uncompromising commitment to quality. With each harvest, rigorous selection in the vineyard and winery sees one hundred barrels of wine whittled down to 12,000 bottles that reflect a lifetime of hard work, passion and conviction.

“It’s not about me and the team, there’s a bigger picture here. It’s all about the properties - their soils, the people that were behind them historically, their place in the community. And then how we found them, and what we’re doing with them now.”

David Abreu